

Sotogrande

Reference 119843



PORTA MONDIAL®

Your home. Our passion.

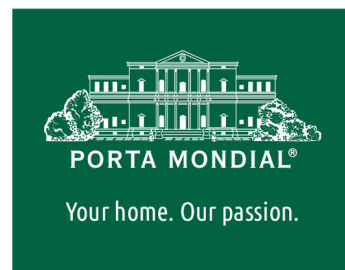
Wonderful building plot in La Reserva de Sotogrande

plot area:	4.539 m ²	water:	-
sea view:	✓		
dev. Potential:	-		
building permit:	-		
electricity:	-	price:	€ 1,100,000.-



Sotogrande

Reference 119843



Details:

This spectacular, south-orientated and slightly sloping building plot is situated at the foot of the La Reserve golf course, and provides breathtaking views over the Mediterranean sea as far as Gibraltar and the Straits of Gibraltar.

It offers great privacy, and up to 25% of its area of 4.539 sqm can be constructed making it ideal for the construction of a wonderful villa.

It is probably one of the finest plots of land in La Reserve de Sotogrande, an idyllic area where avant-garde architectural projects are realised. In addition it is located within easy reach of the prestigious Sotogrande international school. The plot is surrounded by 9 excellent golf courses including the best continental golf course in Europe, the Real Club Valderrama which was the venue for the Ryder Cup competition in 1997.

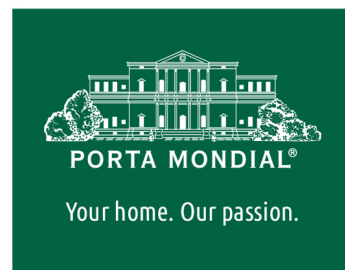
Truly an exquisite Andalusian paradise with a very modern country club. It is surrounded by private villas with views over the Mediterranean and the breathtaking scenery, where the days can be filled with diverse sport and leisure activities.

The innovative service of the resort successfully combines the advantages of living close to the beach, and in an exclusive environment within which the whole family can feel safe and at ease.

The price of the plot does not include 21% Spanish tax.

Sotogrande

Reference 119843



Location & surrounding area:

Sotogrande is an exclusive and picturesque resort on the Costa del Sol in Andalusia, Southern Spain. This charming town is located in the province of Cádiz, near the city of San Roque.

The location of Sotogrande is remarkable as it sits both along the coast and amidst a breathtaking natural landscape. The surroundings are characterized by lush greenery, majestic mountains, and the azure blue Mediterranean Sea, providing a unique backdrop for the community.

Sotogrande is renowned for its luxurious atmosphere and impressive real estate, including magnificent villas, elegant apartments, and top-notch golf facilities. In fact, golf is a significant part of life here, boasting some of Europe's finest golf courses such as the Real Club Sotogrande and the Real Club Valderrama. Additionally, polo fields like the Santa Maria Polo Club can also be found here.

The area features an elegant marina where luxury yachts and sailboats dock. The harbor offers a variety of restaurants, bars, and shops, ensuring a sophisticated shopping and dining experience. Overall, Sotogrande is a place that combines exclusivity, beauty, lifestyle, and relaxation. It is a popular destination for discerning travelers seeking a high-quality experience along the Spanish coast.

Sotogrande is located not far from Gibraltar, Marbella, and Estepona. The airports of Malaga and Jerez are only 150 km away from Sotogrande.

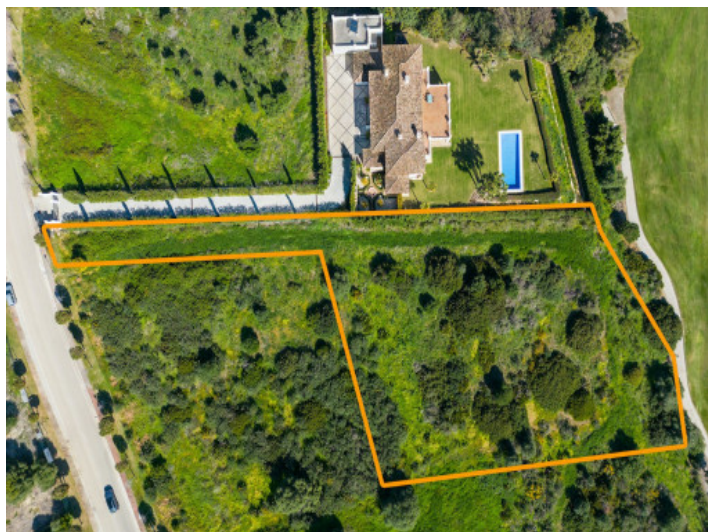
Sotogrande

Reference 119843



PORTA MONDIAL®

Your home. Our passion.



View from above



Plot of land nearby the sea



Plot of land

All information is correct to the best of our knowledge. Errors and prior sale excepted. This prospectus is purely for information purposes. Only the notarized deed of sale is legally binding.

PORTA ANDALUCIA • C./ CONQUISTADOR 8, 07001 PALMA DE MALLORCA
TEL. +34 971 720 164 • INFO@PORTAANDALUCIA.COM